

# » sport

## SPORTS FLOORING

FOR MULTI-PURPOSE, GROUP AND INDIVIDUAL SPORTS AREAS



**SPORTEC®**



**OUTDOOR SPORTS AREAS**

page 6-9

**BASKETBALL**

page 12-13

**GOLF**

page 22-23

**TENNIS**

page 10-11

**TRACKS**

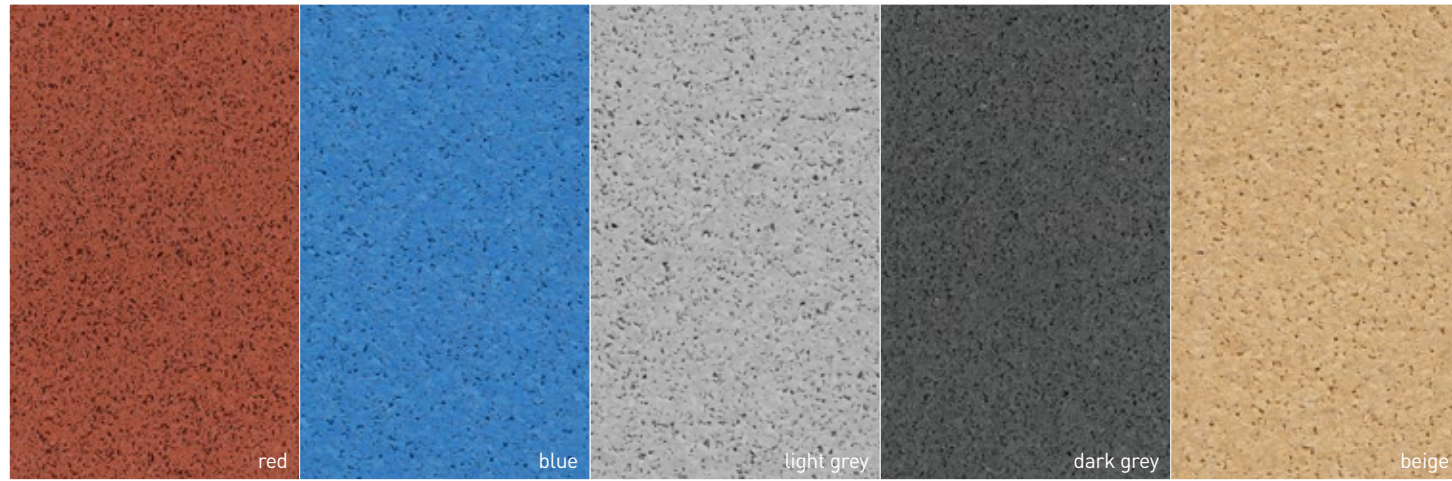
page 14-17

**SPORTS HALLS**

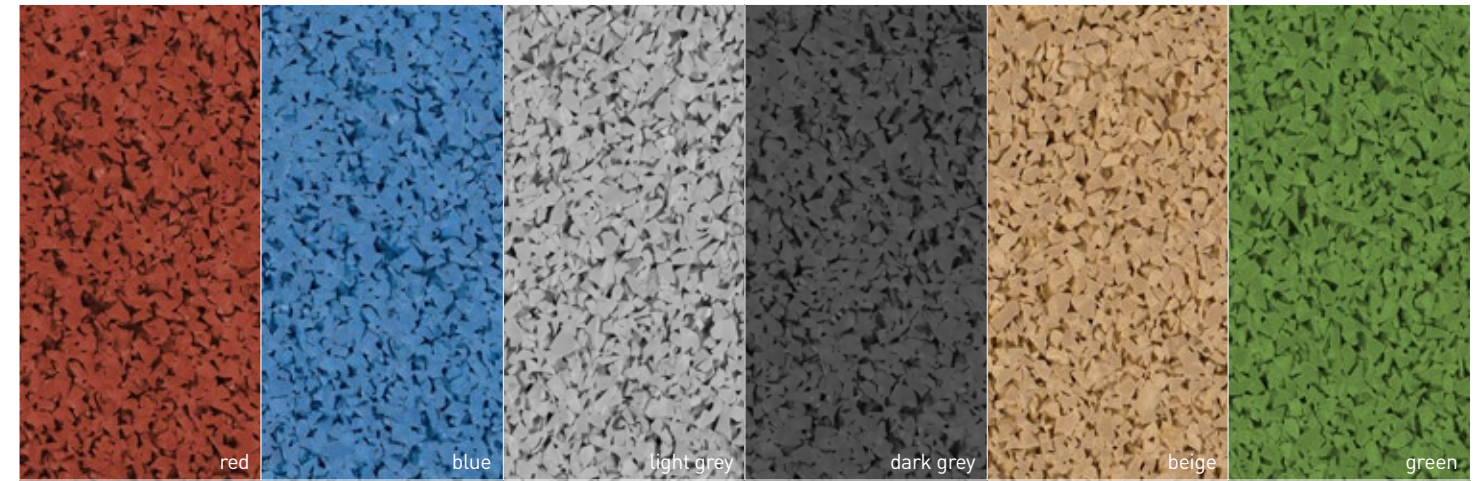
page 6-9



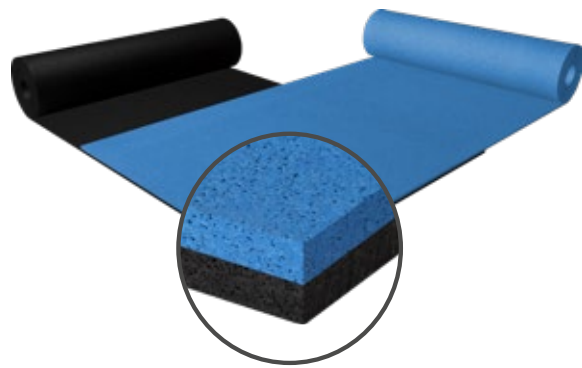
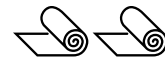
» SPORTEC® UNI classic



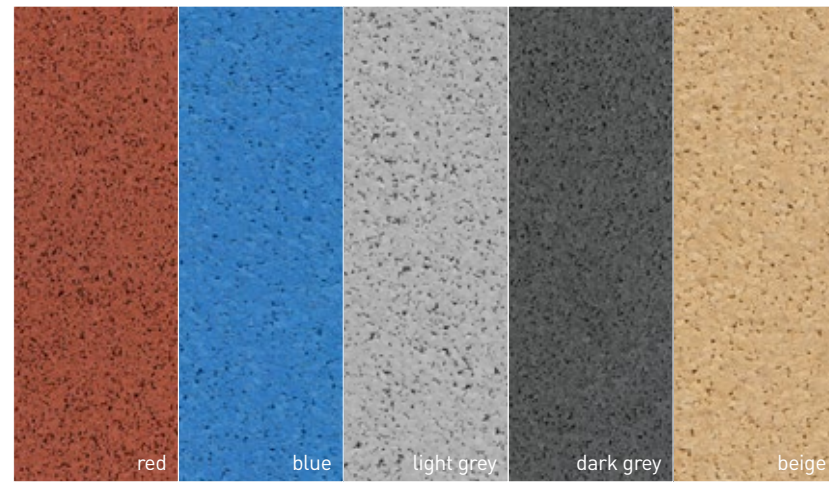
» SPORTEC® UNI versa



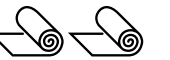
» SPORTEC® UNI classic sandwich



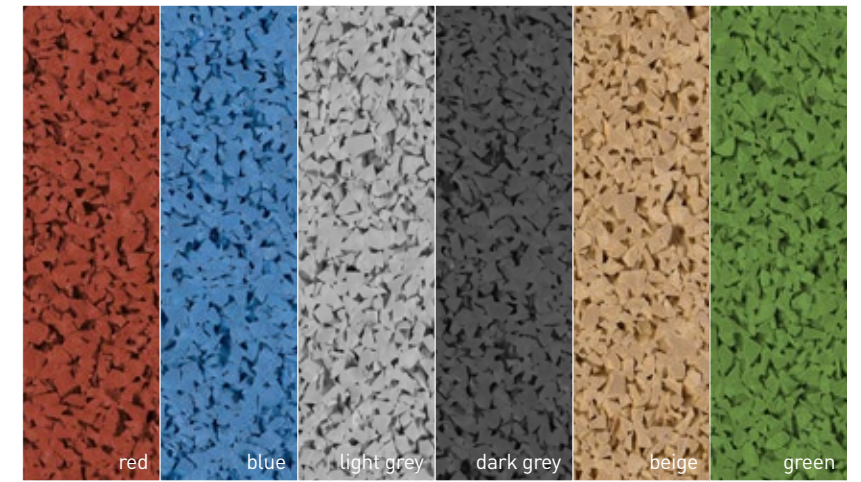
supplied in two separate rolls



» SPORTEC® UNI versa sandwich



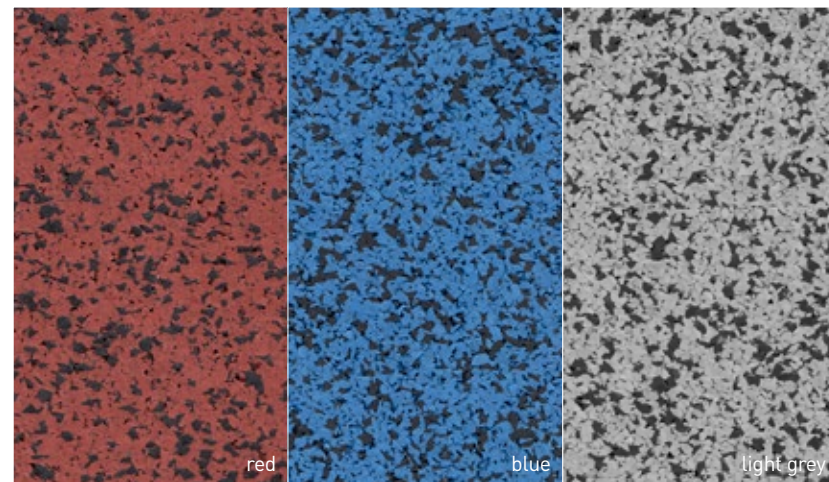
supplied in two separate rolls



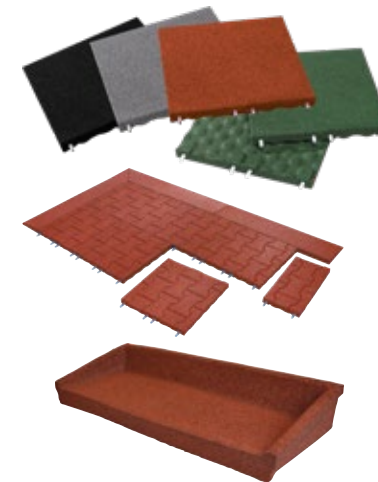
» SPORTEC® fusion



pre-fabricated double-layer rolls



» SPORTEC® golf tile / golf interlocking paver tile / golf ball reservoir





# » MULTISPORT



**ROBUSTNESS. PLAY COMFORT.**  
**100% BALL REBOUND BEHAVIOUR.**

### A wide variety of sports on one pitch.

Multi-sports surfaces have to withstand a wide variety of loads. No matter whether dynamic changes of direction, impacts or accelerations: The SPORTEC® UNI series cuts a fine figure with its robustness, weather resistance and high playing comfort thanks to elasticity. The ball rebound behaviour of 100% makes the sports floor a perfect choice for a wide variety of ball sports.









# » TENNIS



**ITF TESTED. PLAY COMFORT.**  
**100% BALL REBOUND BEHAVIOUR.**

## For tennis players of all levels.

The elasticity of our UNI versa sandwich system enables high ball rebound and playing comfort on tennis courts. SPORTEC® UNI versa sandwich is also tested according to ITF CS 01/02 slow (1) standard. The SPORTEC® UNI versa series is available in many colours, which allows numerous design variations.



# » BASKETBALL



**PLAY COMFORT. RESISTANCE.**  
**100% BALL REBOUND BEHAVIOUR.**

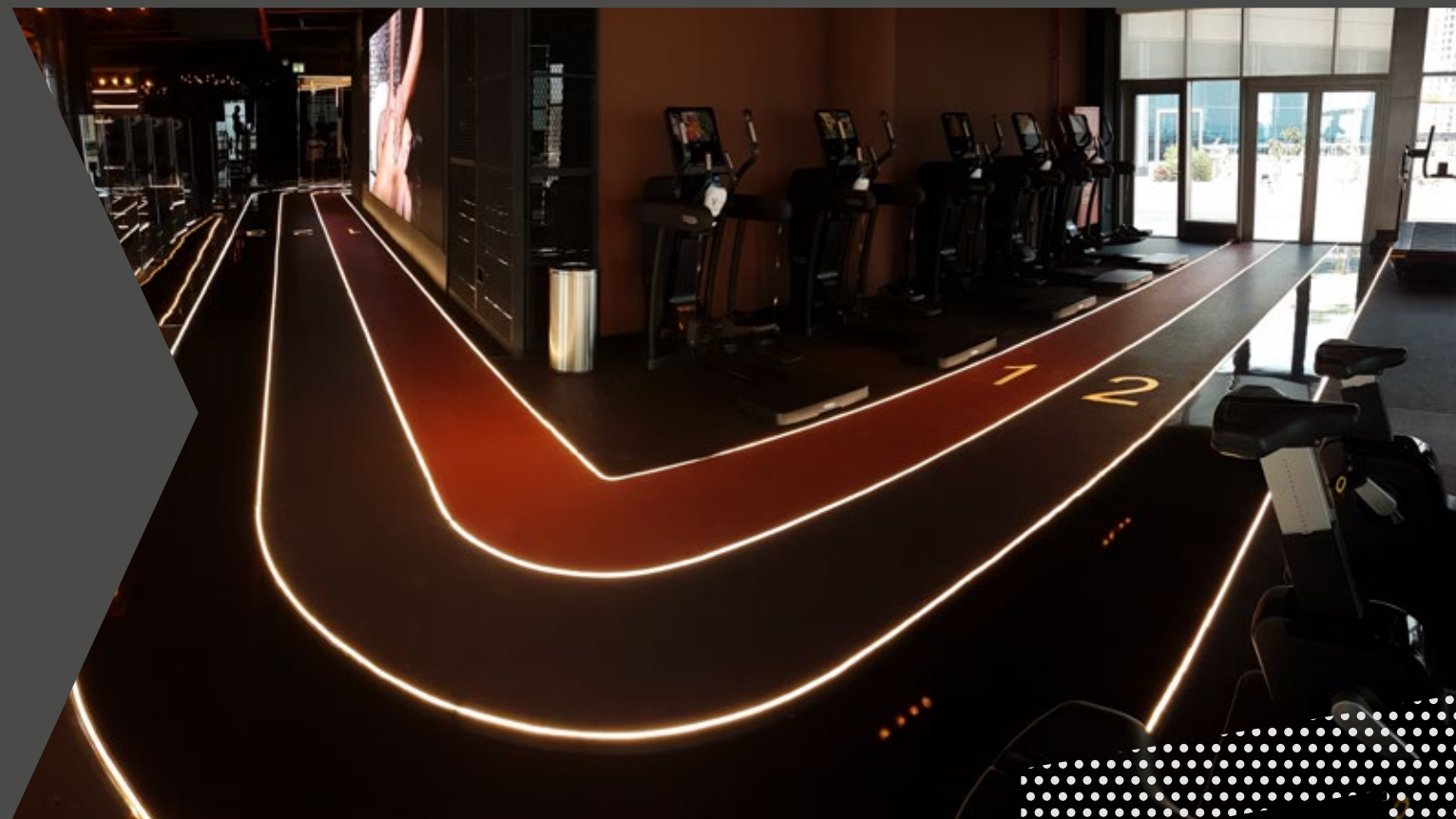
## Fun to play on worldwide.

Due to the elasticity of the SPORTEC® UNI versa series, basketball courts offer a high level of playing comfort. This also ensures a ball rebound behaviour of 100%. High durability and weather resistance in all areas and climatic zones of the world make sports floors from SPORTEC® a perfect choice for basketball.





# » TRACKS



**ROBUST. SPIKE-RESISTANT.**  
**FAST DRYING.**

## Modern running tracks - indoor and outdoor.

SPORTEC® products can be used outdoors as components of certified systems. The installation of the roll material is much easier than, for example, Insitu. Fast drying due to the open-pored surface structure, spike resistance and a slip-resistant surface (R10, sliding friction of approx. 0.8µ) round off the requirements profile. You can find more information on system-certified raceways and associated SPORTEC® components in our E-Layer brochure.

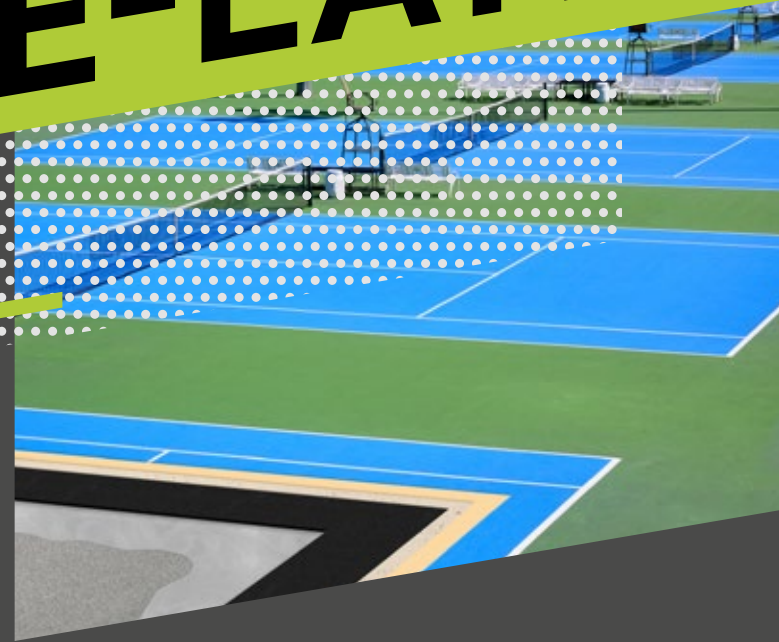








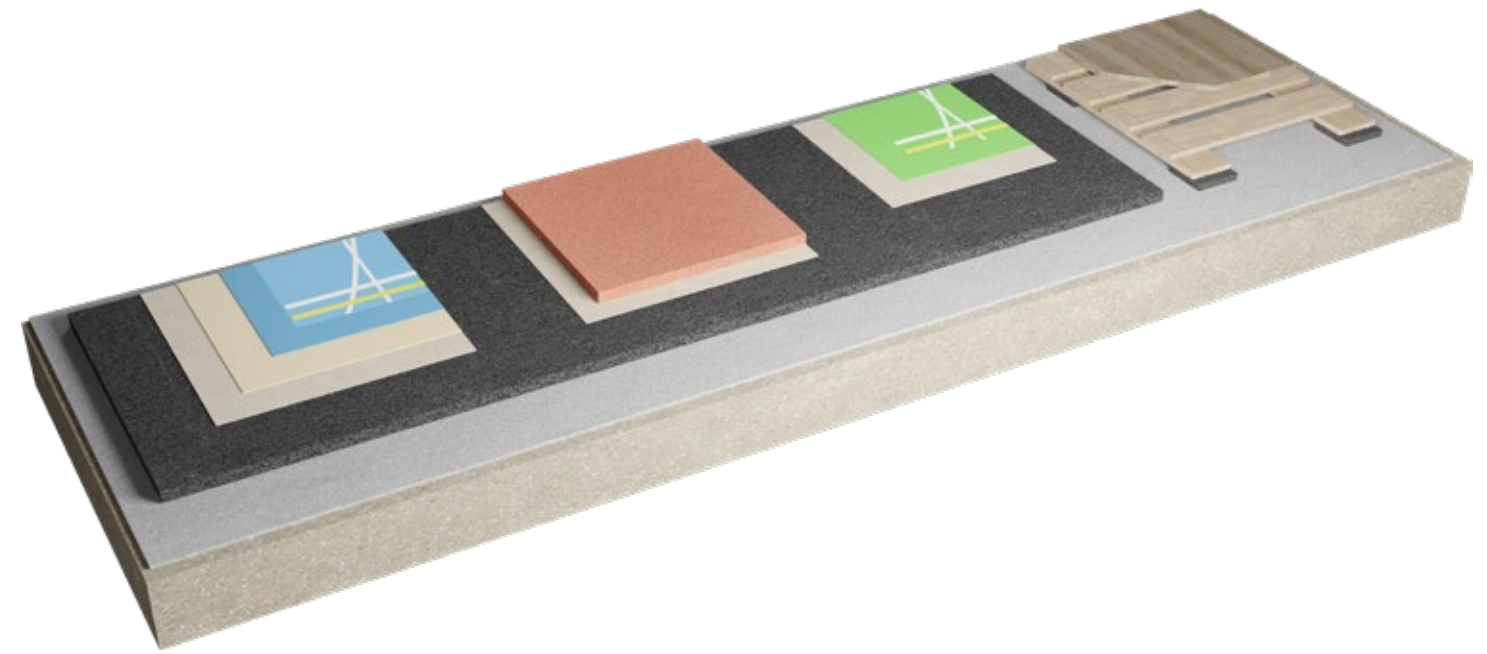
# » E-LAYERS



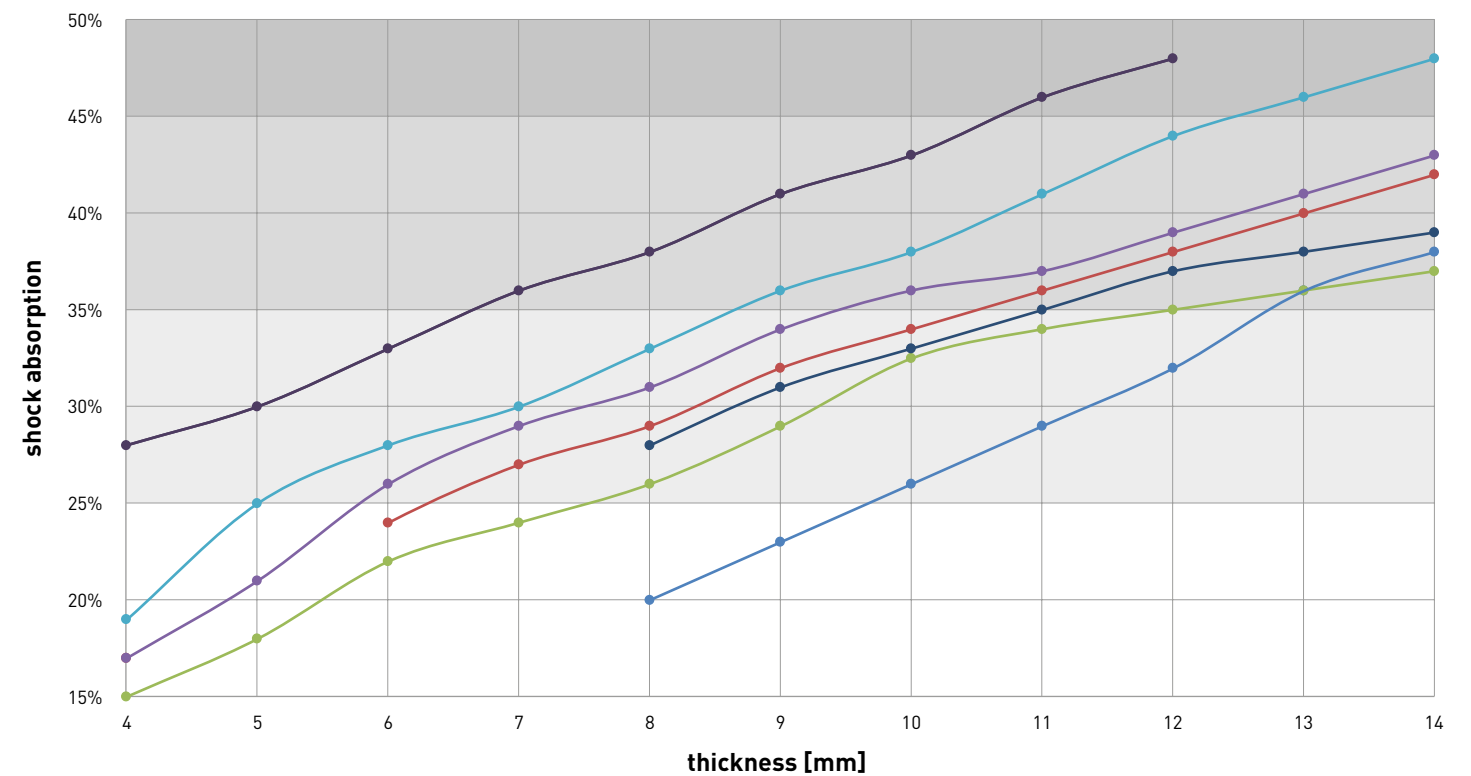
**SHOCK ABSORPTION. ELASTICITY.**  
**CONFORMITY TO STANDARDS.**

### Additional comfort for all common sports surfaces.

Whether you are planning sports floor systems with acrylic, PU, wood, EPDM in situ/roll material or artificial turf: SPORTEC® offers an optimal solution for all common systems. Many of them are compliant with the respective current standards in terms of shock absorption. You can find more information in our E-Layer brochure.



## Technical performance



**SPORTEC® E-Layer brochure**  
 Do you need more information about elastic layers? Please download our brochure.





# » GOLF



**STABILITY. WALKING COMFORT.**  
**SPIKE-RESISTANCE.**

### For teeing areas and walkways.

The SPORTEC® golf tile and golf H-paver tile provide secure footing in teeing areas and on walkways in golf courses. They are also robust and resistant to abrasion, so that they can also be driven over with caddies. Spikes also wear out more slowly on them than on asphalt and concrete slab walkways. The golf ball reservoir is rot-resistant and extremely stable so that it can serve as a reservoir for golf balls all year round.





# INSTALLATION ACCESSORIES



**GLUEING. SEALING.  
CLEANING.**

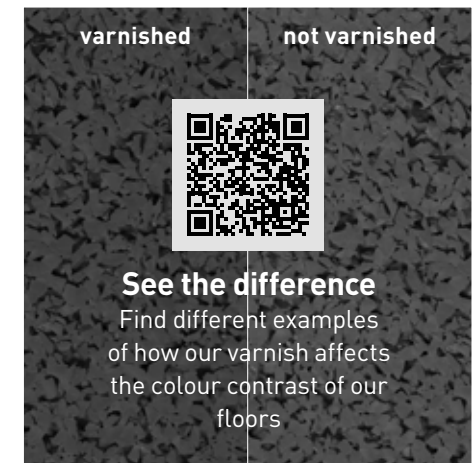
## SPORTEC® varnish. cleaner. adhesive.

These products perfectly complement our SPORTEC® floor coverings. Our PU adhesive bonds the rolls to the sub-base to create a permanently fixed, yet elastic, floor. The varnish protects the colours and makes cleaning a lot easier and our cleaner helps to remove even the most stubborn dirt from the floor.

## » SPORTEC® Varnish RZ TURBO PROTECT ZERO



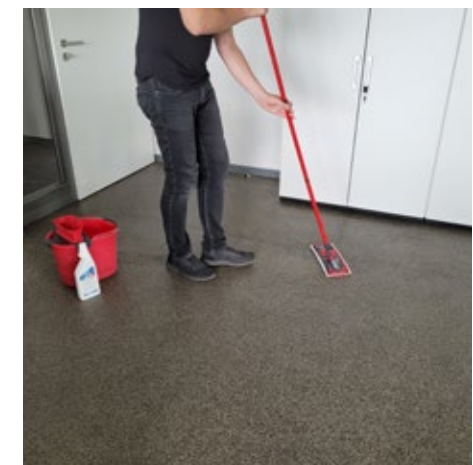
<b>Packsize</b>	4.5 l + 495 ml hardener
<b>Pot life (20°C)</b>	120 Min. (20 °C / 60 % relat. LF)
<b>Ready for foot traffic (20°C)</b>	after approx. overnight drying
<b>Completely cured (20°C)</b>	after approx. 7 days



## » SPORTEC® Cleaner RZ INTENSIVE CLEANER



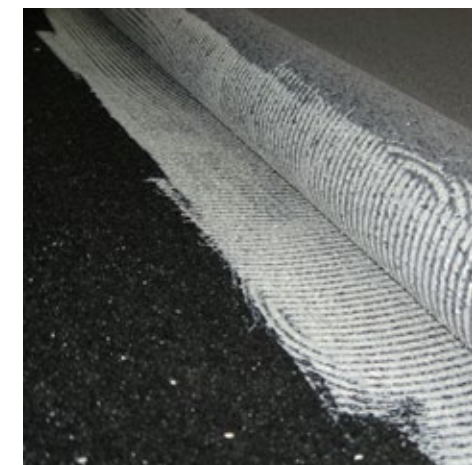
<b>Packsize</b>	750 ml or 5 l
<b>Working temperature</b>	18 - 25 °C
<b>Area</b>	10 l: 250 m <sup>2</sup>



## » Adhesive SPORTEC® 700



<b>Packaging</b>	Set of 10, 25 or 28 kg (mixing ratio Base : Curing Agent = 850 : 150)
<b>Pot life (20°C)</b>	approx. 30-60 minutes
<b>Ready for foot traffic (20°C)</b>	after approx. 8 hours
<b>Completely cured (20°C)</b>	after approx. 36 hours





## Technical data

### SPORTEC® UNI classic

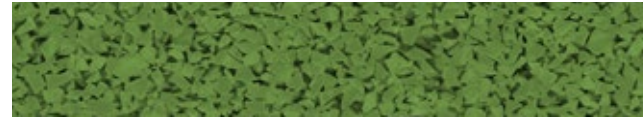


**Material** Fine-grain EPDM colour granules bonded with polyurethane elastomer

**Dimensions** Roll width: 1,250 mm  
Roll length: 15 m

**Thicknesses** 4 mm (other thicknesses on request)

### SPORTEC® UNI versa

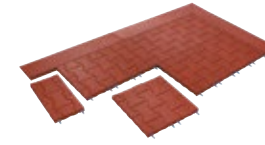


**Material** Coarse-grained coloured EPDM granules bonded with polyurethane elastomer

**Dimensions** Roll width: 1,250 mm  
Roll length: 30 m

**Thicknesses** 4 mm (other thicknesses on request)

### SPORTEC® golf interlocking paver slab



**Material** Recycling tyre rubber granules bonded with polyurethane elastomer.

**Dimensions** 500 x 500 mm

**Thicknesses** 40 mm

### SPORTEC® golf ball reservoir



**Material** Recycling tyre rubber granules bonded with polyurethane elastomer.

**Dimensions** 630 x 250 mm

**Thicknesses** 85/55 mm

### SPORTEC® UNI classic sandwich



**Material** **Top layer:** fine-grain EPDM colour granules bonded with PU-elastomer  
**Elastic layer:** fine-grain recycled tyre rubber granules bonded with PU-elastomer.

**Dimensions** Roll width Top layer: 1,250 mm  
Elastic layer: 1,500 mm  
Roll length Top layer: 15 m  
Elastic layer: 30 m  
(other lengths on request)

**Thicknesses** Top layer: 4 mm  
Elastic layer: standard thicknesses SPORTEC® standard (other thicknesses on request)

### SPORTEC® UNI versa sandwich



**Material** **Top layer:** coarse-grain EPDM colour granules bonded with PU-elastomer  
**Elastic layer:** fine-grain recycled tyre rubber granules bonded with PU-elastomer.

**Dimensions** Roll width Top layer: 1,250 mm  
Elastic layer: 1,500 mm  
Roll length Top layer: 30 m  
Elastic layer: 30 m  
(other lengths on request)

**Thicknesses** Top layer: 4 mm  
Elastic layer: standard thicknesses SPORTEC® standard (other thicknesses on request)

### SPORTEC® fusion



**Material** **Top layer:** Fine-grain EPDM colour granules bonded with PU-elastomer  
**Elastic layer:** Fine-grain recycled tyre rubber granules bonded with PU-elastomer

**Dimensions** Roll width: 1,250 mm  
Roll length: 15 m

**Thicknesses** 8 mm

### SPORTEC® golf tile



**Material** Recycling tyre rubber granules bonded with polyurethane elastomer

**Dimensions** 500 x 500 mm

**Thicknesses** 30 mm

### More technical data:

visit [www.kraiburg-relastec.com/sportec/en](http://www.kraiburg-relastec.com/sportec/en)

### EPDM colour range



### Other SPORTEC® brochures



Fitness

Gymcoustic

Commercial

E-layers

Shooting

Winter sports





## General installation instructions

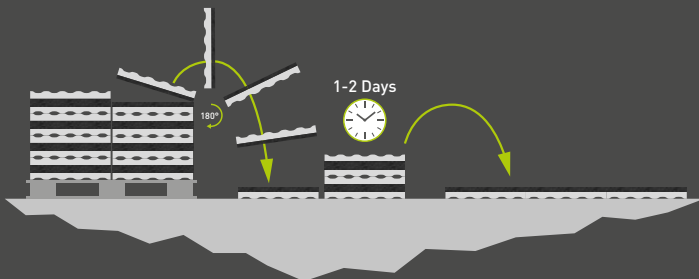
### Required tools

gloves, measuring tape, cutter, chalk line, jigsaw and rubber hammer for tiles, pressure roller for rolls



### Acclimatisation

The floor covering should be unstacked from the pallet before laying and stored 1-2 days where it will be laid.



**Adhesive (700 g/m<sup>2</sup>), varnish (100 ml/m<sup>2</sup>), cleaner (40 ml/m<sup>2</sup>)**  
Please add the required quantity to your order.

### Detailed installation instructions for each product

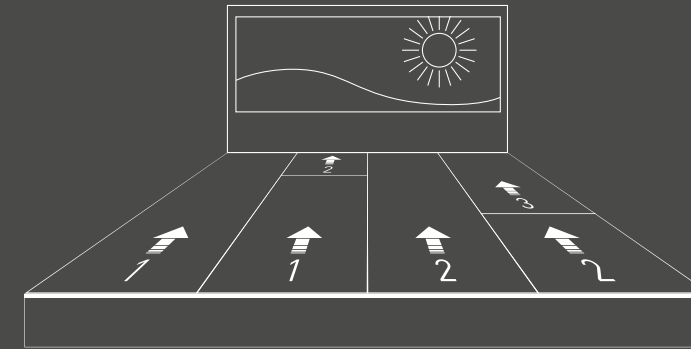
[www.kraiburg-relastec.com/sportec/en/downloads](http://www.kraiburg-relastec.com/sportec/en/downloads)

### Installation videos on YouTube

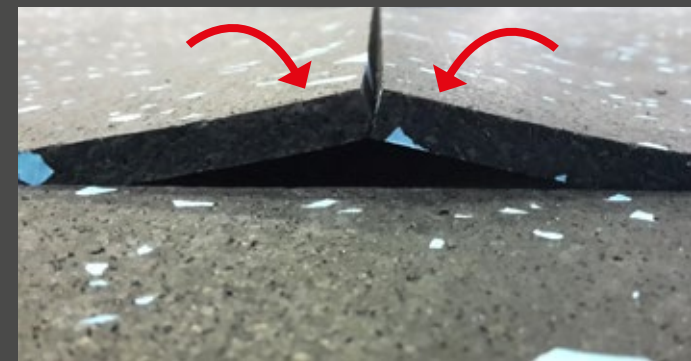


## Installation of rolls

SPORTEC® rolls should always be aligned in the same direction towards the brightest part of the room.



SPORTEC® rolls should be laid with pressure on the butted joints (close to overlapping). No welding or joint filler is required.



SPORTEC® rolls should be completely glued to the floor. Thicker rolls (from 10 mm thickness) can be fixed with industrial double-sided adhesive tape.

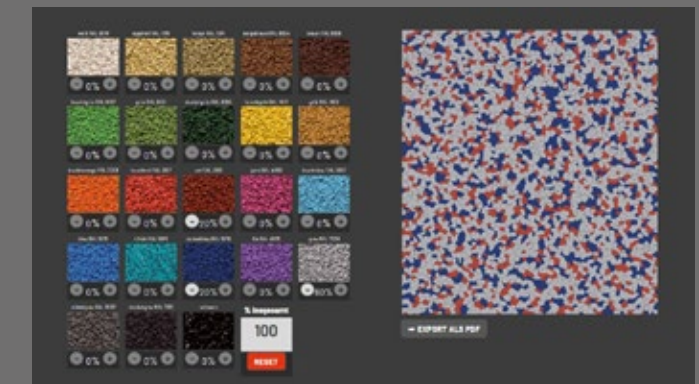


## SPORTEC® website - tools



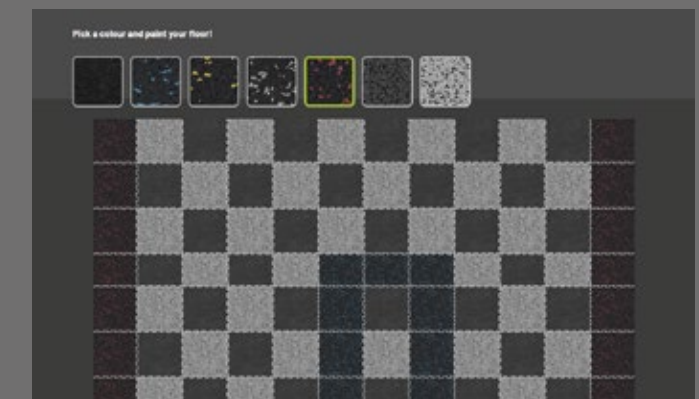
[www.kraiburg-relastec.com/sportec/en/room-designer](http://www.kraiburg-relastec.com/sportec/en/room-designer)

Plan your room with the colour of your choice!  
Select the photo that best suits your application and change the colours of the SPORTEC® product in the picture.



[www.kraiburg-relastec.com/sportec/en/color-mixer](http://www.kraiburg-relastec.com/sportec/en/color-mixer)

Create your own SPORTEC® variant floor covering. Choose up to 5 different colours from our EPDM colour palette and adapt the design to your wishes.



[www.kraiburg-relastec.com/sportec/en/puzzle-2-0-designer](http://www.kraiburg-relastec.com/sportec/en/puzzle-2-0-designer)

Lay out your room with puzzle mats and plan the colours exactly with our SPORTEC® puzzle Designer! Choose from 3 different presets (plain surface, chequered pattern, stripes) and adjust your surface exactly according to your wishes. Export the surface as PDF and start a non-binding price inquiry.



Why should I use rubber rolls for a sports floor?

SPORTEC® roll goods are particularly good as a sports floor in leisure areas, schools or for amateur sports clubs. They are usable for tennis, basketball and running activities.



How can I install the individual rolls?

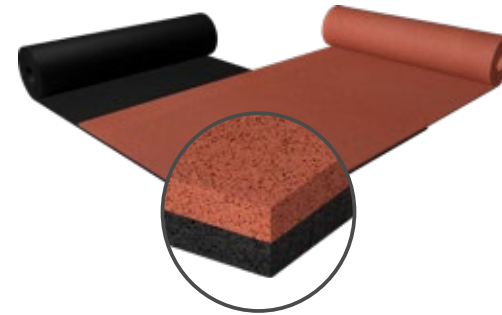
On site, the rolls can be cut to the desired length or shape and then simply glued down to a suitable sub-base; either concrete or asphalt. With a team of 3-4 people the installation is relatively easy and you don't need any special machines.

How thick does the sports floor have to be?

For a short running track, a 4 mm floor covering is sufficient, but more commonly we recommend a 4 + 4mm sandwich system for various applications such as multi-purpose sports fields, tennis or indoor halls. It is however possible to have up to 10+4 sandwich systems for extra athlete comfort.

A Sandwich-System??

This is a 2-layer system of 4 mm SPORTEC® UNI versa or SPORTEC® UNI classic plus an elastic layer of SPORTEC® standard underneath. The elastic layer can vary in thickness depending on the requirements.



What do I need this elastic layer for?

It increases comfort and protects the joints by absorbing shocks so that the body is less stressed. This makes the floor feel more comfortable and a lot safer.

Can I use this rubber floor everywhere?

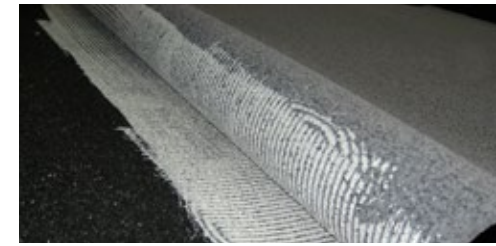
Our floors are covered by the standard EN 14877 for „plastic surfaces on outdoor sports facilities“ and has been tested and approved. So, it can be used as an all-round solution, except when additional certification is required, for example, an IAAF certificate.

Does the sports floor have to be sealed?

In an outdoor area no varnish is required. Indoor areas using SPORTEC® UNI classic can be sealed in special circumstances, but as a rule, no varnish is necessary.

Which glue should I use?

All SPORTEC® products should be glued with a 2-component PU adhesive. This is very resistant, especially for outdoor use.



What is the best elastic layer for sports halls?

In our E-Layer brochure, we show the perfectly suitable elastic layer for all relevant sports floor systems. You can download it at [kraiburg-relastec.com/sportec/en/downloads](http://kraiburg-relastec.com/sportec/en/downloads)

What about fire protection?

Our floorings have different fire classes from E<sub>fl</sub> to C<sub>fl</sub>-s1. For all tenders we have a fitting solution.



How long does the floor last?

Typically 6-8 years, but it can also last much longer. It really depends on the frequency of use, the outdoor climate and the maintenance of the sports ground.

What can I do if there is one roll or edge that comes loose?

Easy, just clean and tidy the loose area and glue it back down to the sub-base.

Who is my contact person?

On our homepage you will find the right contact person for your region. [www.kraiburg-relastec.com/sportec/en/contact-persons](http://www.kraiburg-relastec.com/sportec/en/contact-persons)





# SUSTAINABILITY

Corporate Carbon Footprint, Product Carbon Footprint, Energy Management, Social and economic sustainability at KRAIBURG Relastec



## Recycling of up to 60,000 t material

Every year, we process and recycle up to 60,000 tons of old tyres, closed-cell rubber foams and rubber production scrap.



## Reduction of CO<sub>2</sub> emissions

By using recycled rubber granulate, we save more than 130,000 tonnes of CO<sub>2</sub> emissions per year compared to virgin rubber.



## Corporate Carbon Footprint

The CCF was developed in accordance with the Greenhouse Gas Protocol audit.



## Coming soon: Product Carbon Footprint

The PCF is measured in accordance with ISO 14067 and ISO 14040/44.



## Energy management according to ISO 50001

Our energy management system is in accordance with ISO 50001 standards. Energy-relevant topics are taken into account in all processes of the organisation.



## Bronze Rating

The ecovadis rating covers numerous management systems, including environmental impact and sustainable procurement. More information: [www.ecovadis.com](http://www.ecovadis.com)



## Member of NEW LIFE initiative

The declared aim of NEW LIFE is to demonstrate the advantages of recycled products from End-of-Life Tyres (ELT) to the media, politicians and the general public and to motivate them to act sustainably.

More information: [www.initiative-new-life.de/en](http://www.initiative-new-life.de/en)



## Social sustainability

Acting in accordance with our values such as equal opportunities, social responsibility, respectful treatment and transparency, is our foundation for practicing social sustainability.



## Economic sustainability

As a family business, KRAIBURG Holding pursues a long-term strategy. Profits generated are used to a significant extent to make our holistic business model ever more efficient and future-proof.



# CORPORATE CULTURE

Defined values, social norms and guidelines, for common action and cooperation inside and outside KRAIBURG Relastec.



## Equal opportunities

We stand for equal opportunity, diversity, inclusion and religious diversity.



## Social responsibility

Fair pay, collective bargaining, further training, career development, work-life integration.



## Respect

We are honest, reliable, respectful and trustworthy towards our colleagues and partners.



## Strong decision-making powers

We ensure speed in process handling, faster technology optimisations and lean processes.



## Responsible for our actions

We take responsibility for all decisions and results. Error acceptance and the strong will to correct and learn from them are firmly anchored in our culture.



## Transparency

We practice open, transparent cooperation both inside and outside the company.



# WHAT SETS US APART



## Internationality

With an export quota of over 50%, we have already exported our products to over 100 countries.



## Easy complaint management

Transparent and optimised processes ensure rapid processing.



## Flexibility with customer requirements

We offer our partners customised options for packaging, labelling and delivery, packaging, labelling and delivery.



## Long-term relationships

We maintain long-term relationships with our customers and suppliers based on mutual respect and fairness.



## Marketing support

We provide you with the best possible support in the form of images or in the design of your documents.



## Personal contact persons

We do not hide behind support hotlines and contact forms. With us, you have personal, competent contact persons.



## Product quality

Our products meet the highest quality standards. They are durable, a perfect fit and made from high-quality raw materials.



## Innovation and product design

We continuously develop new products according to the requirements of our customers and the market.



# » **MORE FROM YOUR FLOOR**



**Sports flooring and elastic layers**  
made from rubber granules

KRAIBURG Relastec GmbH & Co.KG  
Fuchsberger Straße 4 · D-29410 Salzwedel

Sales:

Tel. +49 (0) 8683 701 -340

Fax +49 (0) 8683 701 -4 340

sportec@kraiburg-relastec.com

www.sportec-flooring.com

No liability accepted for errors or omissions. Subject to changes without prior notice.  
© KRAIBURG Relastec GmbH & Co. KG 2023



Download the latest version  
of this brochure as PDF.